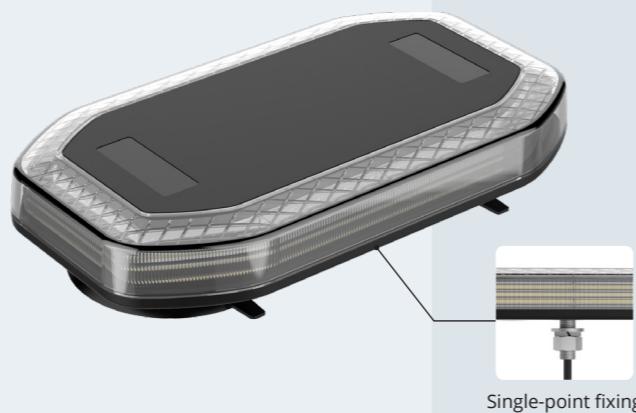




LAP-LUNAR280

MAIN FEATURES

- ✓ Multi-voltage (10-30V)
- ✓ 280mm / 11inch length
- ✓ 108 x 0.5W amber LEDs
- ✓ Single-point fixing
- ✓ Supplied with 1m cable
- ✓ Dimensions.: 280 (L) x 259 (W) x 36mm (H)

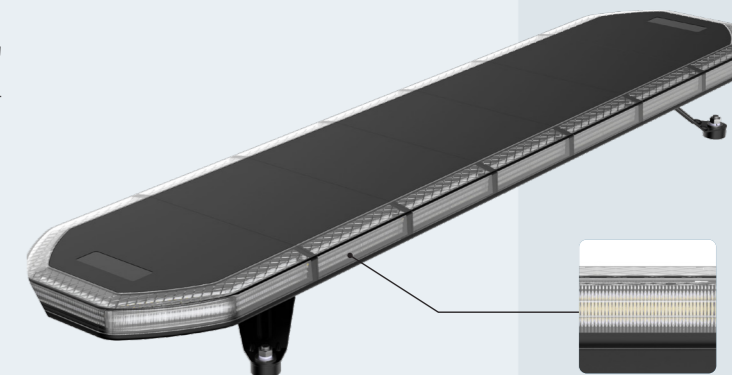


Single-point fixing

LAP-LUNAR1194

MAIN FEATURES

- ✓ Multi-voltage (10-30V)
- ✓ 1194mm / 47inch length
- ✓ 420 x 0.5W amber LEDs
- ✓ Four-point fixing
- ✓ Supplied with 3m cable
- ✓ Dimensions: 1194 (L) x 259 (W) x 105mm* (H)

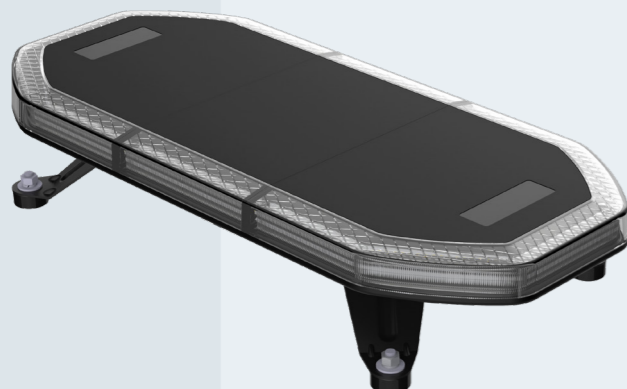


All Lunar lightbars manufactured with 0.5W amber LEDs.

LAP-LUNAR592

MAIN FEATURES

- ✓ Multi-voltage (10-30V)
- ✓ 592mm / 23inch length
- ✓ 228 x 0.5W amber LEDs
- ✓ Four-point fixing
- ✓ Supplied with 3m cable
- ✓ Dimensions: 592 (L) x 259 (W) x 105mm* (H)



All four-point fixed Lunar lightbars supplied with adjustable fixing brackets.

LAP-LUNAR1505

MAIN FEATURES

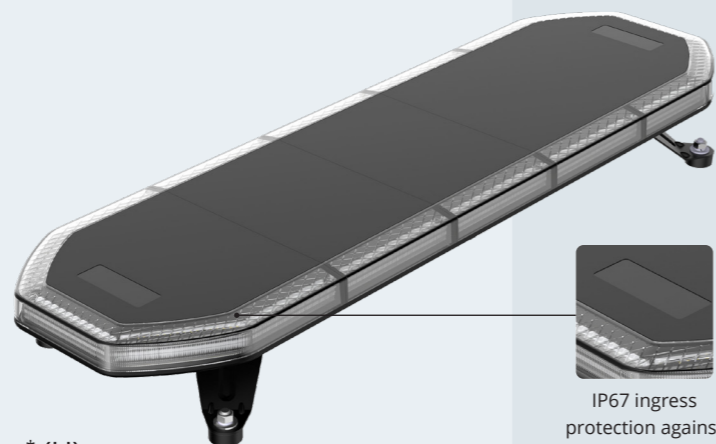
- ✓ Multi-voltage (10-30V)
- ✓ 1505mm / 60inch length
- ✓ 516 x 0.5W amber LEDs
- ✓ Four-point fixing
- ✓ Supplied with 3m cable
- ✓ Dimensions: 1505 (L) x 259 (W) x 105mm* (H)

*including rubber fixing feet and brackets

LAP-LUNAR889

MAIN FEATURES

- ✓ Multi-voltage (10-30V)
- ✓ 889mm / 35inch length
- ✓ 324 x 0.5W amber LEDs
- ✓ Four-point fixing
- ✓ Supplied with 3m cable
- ✓ Dimensions: 889 (L) x 259 (W) x 105mm* (H)



IP67 ingress protection against dust and moisture.

LUNAR DETAILS



4 x ECE R65 approved flash patterns including single & double flash



EMC (ECE R10) approved



IP67 dust and moisture ingress protection



Backed by our 3 year warranty



Exclusively at



enquiries@lapelec.co.uk
+44 (0)121 386 7377
www.lapelec.co.uk

