

LAZER

H I G H P E R F O R M A N C E L I G H T I N G



VW GOLF 2017+ MOUNTING SOLUTIONS

FITTING INSTRUCTIONS

ANLEITUNG

INSTRUCTIONS

INSTRUCCIONES

TECHNICAL SUPPORT

aaron@lazerlamps.com / sales@lazerlamps.com
+44 (0)1992 945601 / +44 (0)1992 677374

WHAT'S REQUIRED

- HIGH PERFORMANCE LED SPOTLIGHT(S) - ST/LINEAR/TRIPLE-R OPTIONS AVAILABLE.
- 1x ONE/TWO LAMP HARNESS KIT
- 1x CANBUS HIGHBEAM INTERFACE
- 1x VW GOLF (2017+) MOUNTING KIT

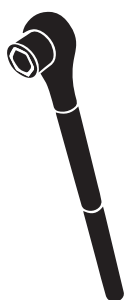
DIFFICULTY LEVEL



TOOLS REQUIRED



DRILL BIT
5MM



METRIC
SOCKET SET



WIRE STRIPPERS
AND RATCHET CRIMPERS



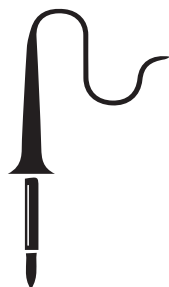
WIRE CUTTERS



BUCKET



ALLEN KEY SET



SOLDERING
IRON



T-25 TORX
SCREWDRIVER



PLASTIC
TRIM TOOLS



RIVET GUN

PRE-INSTALLATION CHECKS

1. Ensure battery is disconnected.

BUMPER REMOVAL



STEP 1



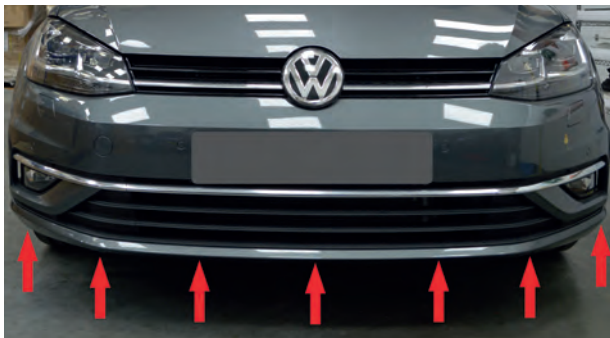
Remove the x2 T25 screws from either side of the grille.

Then gently pull grille off.



STEP 2

Remove the x4 T25 screws as shown on either side of the front wheel arches.



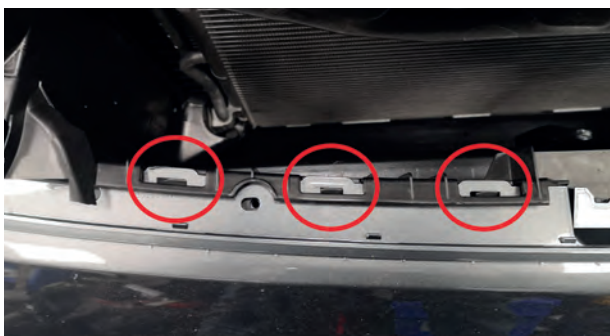
STEP 3

Remove the x7 T25 screws from under the bumper as shown.



STEP 4

Un-clip both sides of the bumper.



STEP 5

Unclip the 3 retaining clips on either side and lower the bumper to the ground.



STEP 6

Unplug fog lights on both sides.

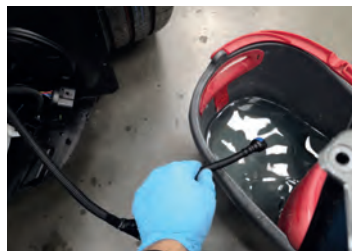


STEP 7

Unplug parking sensors.



STEP 8



Unplug the headlight washer closest to the water reservoir. Use a bucket to catch the screen wash fluid.

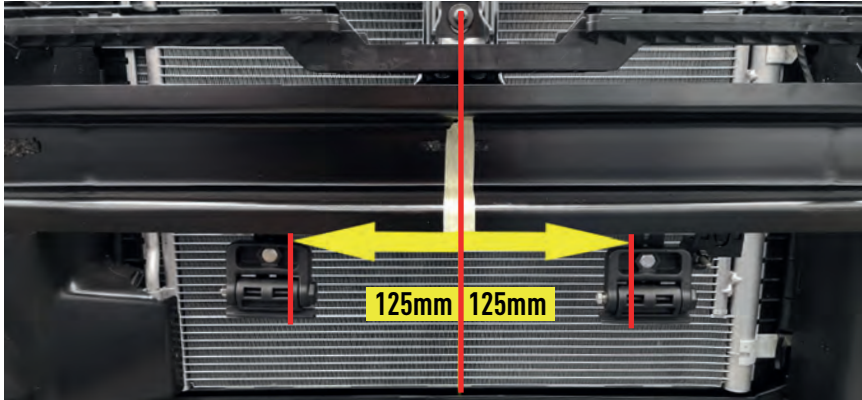


STEP 9

Unplug the headlight washer hose from the bumper and drain into bucket to avoid spilling/slipping.

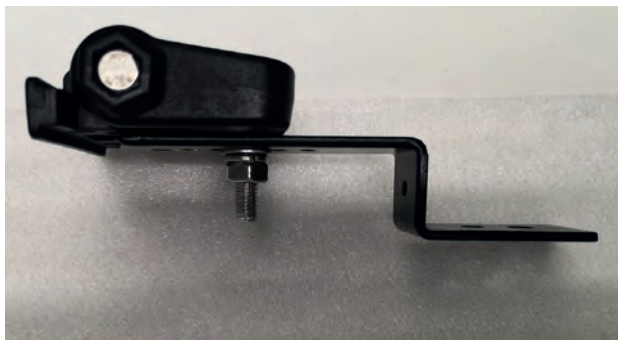
The bumper can now be set aside.

MOUNTING YOUR ST / TRIPLE-R



STEP 1

Mark where the brackets should be mounted on the bumper beam as shown (125mm from centre line).



STEP 2



Bolt the Centre Mounts as shown in the slot hole, in line with the 4th hole.



STEP 3

Drill the 5mm holes for mounting the universal mounting brackets as per the measurements above depending on what light you will mount to your vehicle.



STEP 4



Using a rivet gun, rivet the brackets in place (2 rivets per bracket as shown).



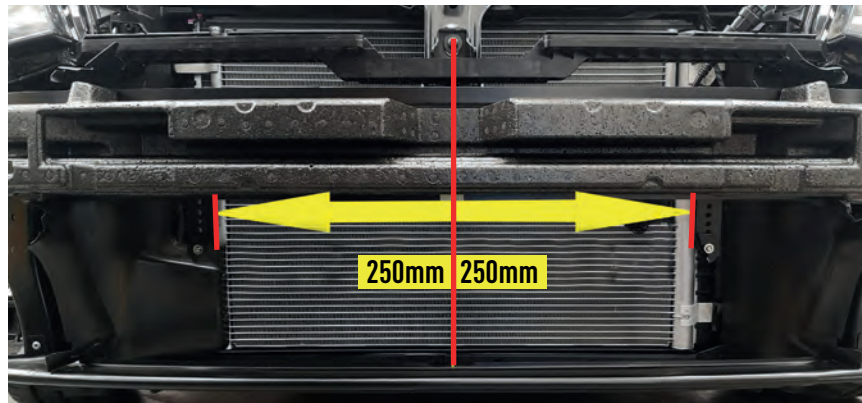
STEP 5

Slide the light(s) on to the centre mounts and position the light(s) in place. Then tighten the M5 grub screws on the centre mounts.

Lights shown: 2x Triple-R 750's, ST12 Evo and Triple-R Smartview.



MOUNTING YOUR LINEAR



STEP 1

Mark where the brackets should be mounted on the bumper beam as shown (250mm from centre line).



STEP 2

Mount the side brackets from the lamp box on to each mounting bracket as shown (in-line with last mounting hole).



STEP 3

Drill the 5mm holes for mounting the universal mounting brackets as per the measurements above depending on what light you will mount to your vehicle.



STEP 4

Using a rivet gun, rivet the brackets in place (2 rivets per bracket).



STEP 5

Mount the Linear-18 to the side brackets using the M6 bolts and washers as shown.

WIRING UP YOUR LIGHT

For instructions on wiring a Triple-R Smartview please refer to the Quick-start guide leaflet in the lamps box.

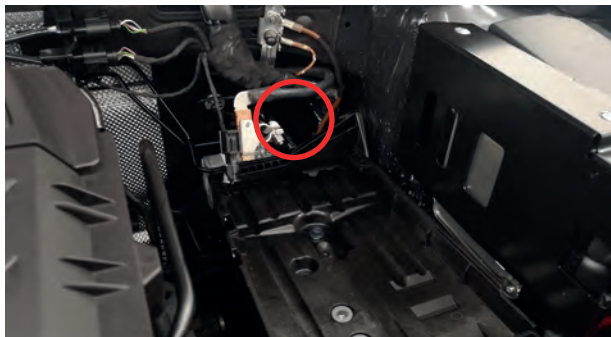
Please note: Vehicle battery will need to be removed for this process.

IMPORTANT INFORMATION!

When you start any VW MY06+ after having the battery disconnected the dashboard will display multiple errors.

To reset the errors please follow steps below:

- 1: TURN ENGINE ON
- 2: TURN WHEELS FULL LOCK TO LEFT
- 3: TURN WHEELS FULL LOCK TO RIGHT
- 4: SWITCH IGNITION OFF
- 5: RESTART VEHICLE AND ERRORS WILL DISAPPEAR



STEP.1

Locate the cable entry grommet that is usually hidden by the vehicle battery.



STEP.2

Feed the thin red cable from Lazer wiring kit through the cable entry grommet.



STEP.3

Locate the cable inside the vehicle which feeds through the cable grommet to the footwell.



STEP.4



Carefully remove climate control facia.

Then pull out the x4 retaining plugs to release the climate panel.



STEP.5

Locate the 2 Can wires in the larger black plug.

Green = Can Hi
Orange/Brown = Can Lo



STEP.6



Connect wireless reader or canM8 white and blue wires to the vehicle Can wires according to Hi/Lo.



STEP.7

Feed Red wire up to climate panel area.



STEP.8

Connect thin red wire from Lazer wiring to purple wire from CanM8.


STEP.9

Find a suitable Live and Ground for CanM8.

Mount the CanM8 under the radio.


STEP.10

Relocate battery **but leave disconnected**.

Drill a hole and secure the relay with a self tapping screw as shown.


STEP.11

Feed the lamp connector(s) through to the front of the bumper.

INSTALLATION CHECKS

1. Re-connect battery.
2. Test light bar is working fully before re-assembling vehicle.

LAZER
 HIGH PERFORMANCE LIGHTING

Thank you for choosing a Lazer Lamps product.
Vielen Dank dafür, dass Sie sich für ein Produkt von Lazer Lamps entschieden haben.
Merci pour choisir un produit de Lazer Lamps.
Gracias por la seleccion de productos de Lazer Lamps.