

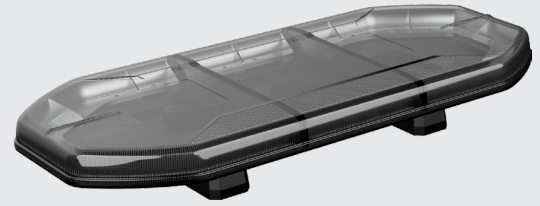
# LUNAR+ LIGHTBARS

LUNAR+ AMBER LED LIGHTBAR RANGE AVAILABLE IN 4 LENGTHS  
AT 592MM, 896MM, 1200MM & 1505MM.



## INTRODUCING THE NEW ECE R65 CLASS I APPROVED LUNAR+ LED LIGHTBAR RANGE, AVAILABLE IN FOUR LENGTHS WITH SMOKED LENS & SEPARATE CAP168 AIRPORT FLASH PATTERN.

Full populated with amber LEDs, the LUNAR+ lightbar range is supplied with rubber fixing feet, designed to fit various vehicles and profiles. Easily switch between ECE R65 approved flash and CAP168 flash patterns.



LAP-LUNAR+592



### KEY POINTS



### APPLICATIONS



### MAIN FEATURES

- ✓ Multi-voltage (10-30V)
- ✓ 4 flash patterns (single & double meet ECE R65 approval)
- ✓ Selectable CAP168 airport flash pattern
- ✓ Stylish smoked lens
- ✓ Supplied with 3m power cable
- ✓ Flexible rubber fixing feet
- ✓ CISPR25 class 3 approved



LAP-LUNAR+592



LAP-LUNAR+896



LAP-LUNAR+1200

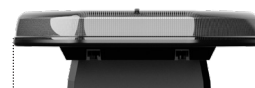


LAP-LUNAR+1505



LAP-LUNAR+896

Part Number	Mounted Dimensions	Number of LEDs	Current Consumption @ 12V / 24V	Weight
LAP-LUNAR+592	592 x 259 x 86mm	240	6.7A / 3.3A	4.0KG
LAP-LUNAR+896	896 x 259 x 86mm	336	8.0A / 4.0A	5.2KG
LAP-LUNAR+1200	1200 x 259 x 86mm	432	9.7A / 4.8A	6.5KG
LAP-LUNAR+1505	1505 x 259 x 86mm	528	10.8A / 5.4A	8.0KG



Full 259mm width design for optimal amber warning light display



Secure 4-point rubber fixing with adjustable mounting eyes