

LAZER

H I G H P E R F O R M A N C E L I G H T I N G



DEFENDER 2020+ EXPEDITION ROOF RACK MOUNTING KIT

FITTING INSTRUCTIONS

TECHNICAL SUPPORT

aaron@lazerlamps.com / sales@lazerlamps.com
+44 (0)1992 945601 / +44 (0)1992 677374

WHAT'S INCLUDED

- 2x Linear Side Mounting Bracket (LH/RH)
- 2x M8 Rivnuts
- 2x M8 Bolts

ALSO REQUIRED

- 1x Linear-36
- 1x One-Lamp Harness (1L-LP-220)
- 1x Extension Kit (8213-2C)

DIFFICULTY LEVEL



TOOLS REQUIRED



SOCKET
SET



ALLEN KEY
SET



SPANNER
SET



RIVNUT
GUN



DRILL BIT

SWITCH HOLE - 20MM
BRACKET HOLE - 12MM
CABLE TIE HOLE - 3MM



PLASTIC TRIM
TOOL SET



CENTRE
PUNCH TOOL



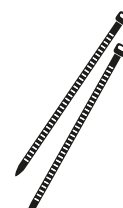
RULER



WIRE
CUTTERS



WIRE STRIPPERS
AND RATCHET CRIMPERS



CABLE TIES

PRE-INSTALLATION CHECKS

Ensure battery is disconnected.

INSTALLATION



STEP 1

Remove the rubber trim to reveal the T30 security bolts.

Remove these T30 bolts (x1 left-hand side and x1 right-hand side).



STEP 2

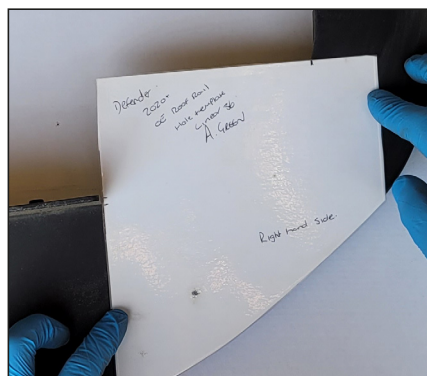
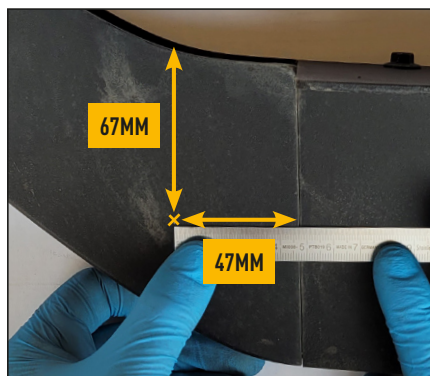
Slide the slat back to reveal the 8mm bolts.

Remove these 8mm bolts (x1 left-hand side and x1 right-hand side).



STEP 3

Slide the front of the rack off carefully.



STEP 4

Mark where to drill (both sides of the roof rack) using the measurements shown or, the paper templates that are supplied at the end of the instructions (please ensure Page Sizing / Scaling is set to Actual Size or 100% scale).

INSTALLATION CONTINUED.**STEP 5**

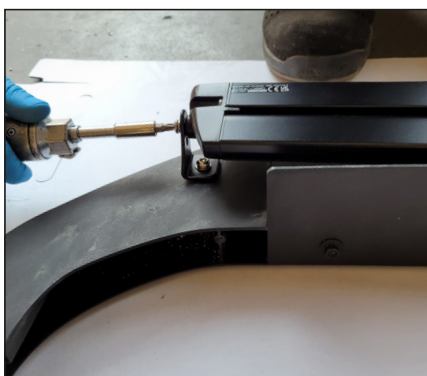
Drill a 12mm hole where you have marked on both left and right sides of the roof rack.

**STEP 6**

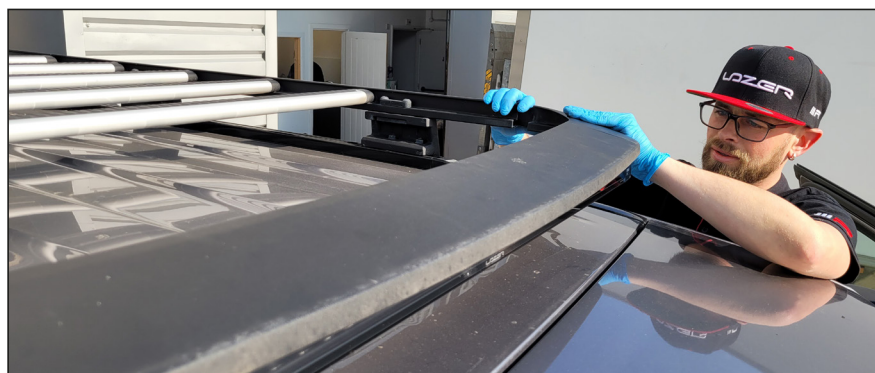
Install the supplied M8 rivnut into the drilled holes and tighten with a rivnut gun.

**STEP 7**

Assemble the linear side bracket and bolts as shown (Bolt, spring washer, washer) and install onto the roof rack.

**STEP 8**

Install the lamp onto the roof rack, using the security bolts included with the lamp.

**STEP 9**

Install the front of the roof rack back onto the car and bolt into place.

INSTALLATION CONTINUED.

STEP 10

Plug the 3m extension cable into the lamp and run the cable down to the vehicle roof.


STEP 11

Tidy the lamp plug by drilling a 3mm hole to cable tie the lamp plug.


STEP 12

Re-install the roof rack slat and run the cable in between the roof rail and the roof ditch.


STEP 13

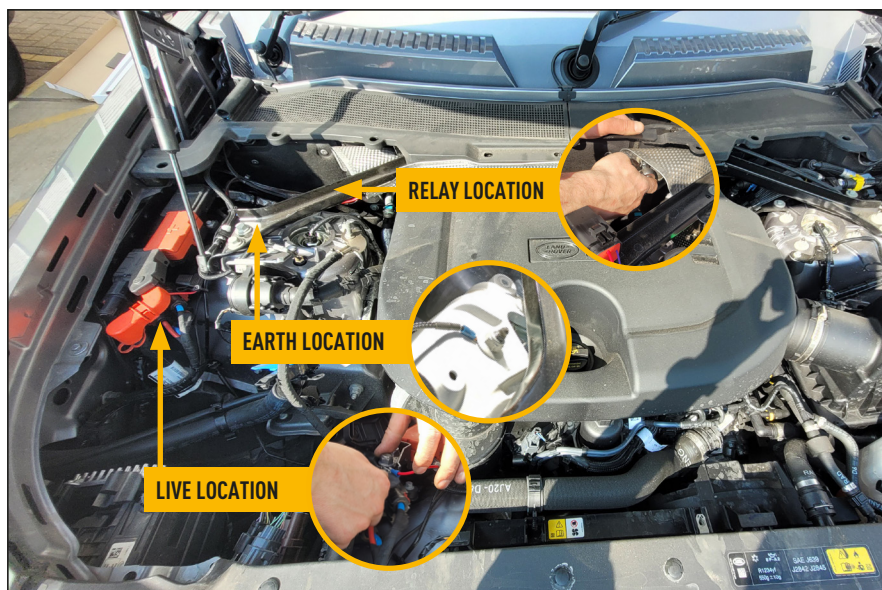
Run the extension cable down to the engine bay by tucking the cable inside of the 'A' pillar trim.


STEP 14

Remove all the screws holding the scuttle panel trim.

then, run extension cable across the scuttle.

INSTALLATION CONTINUED.



STEP 15. LAZER WIRING KIT

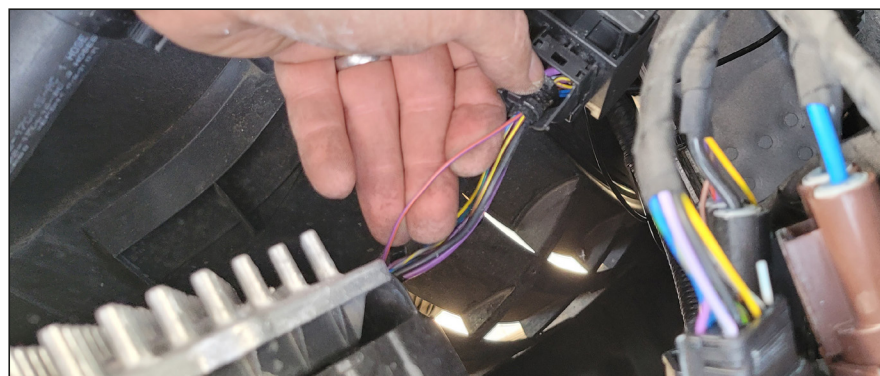
Mount the relay and connect the live and earth connections.



STEP 15. WIRING WITH SWITCH

Run the switch cable through the factory grommet.

Drill a 20mm hole and install the switch.



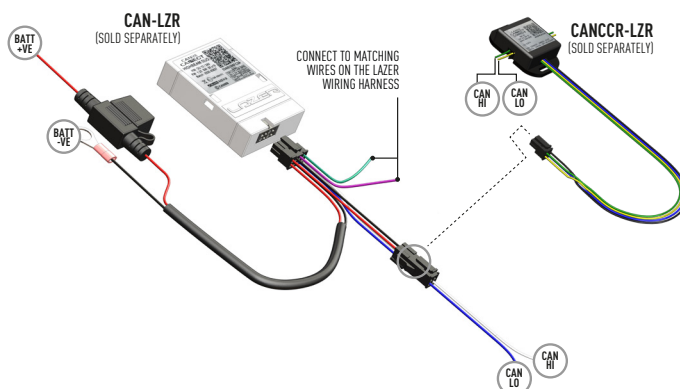
STEP 15. WIRING WITH SPLICE

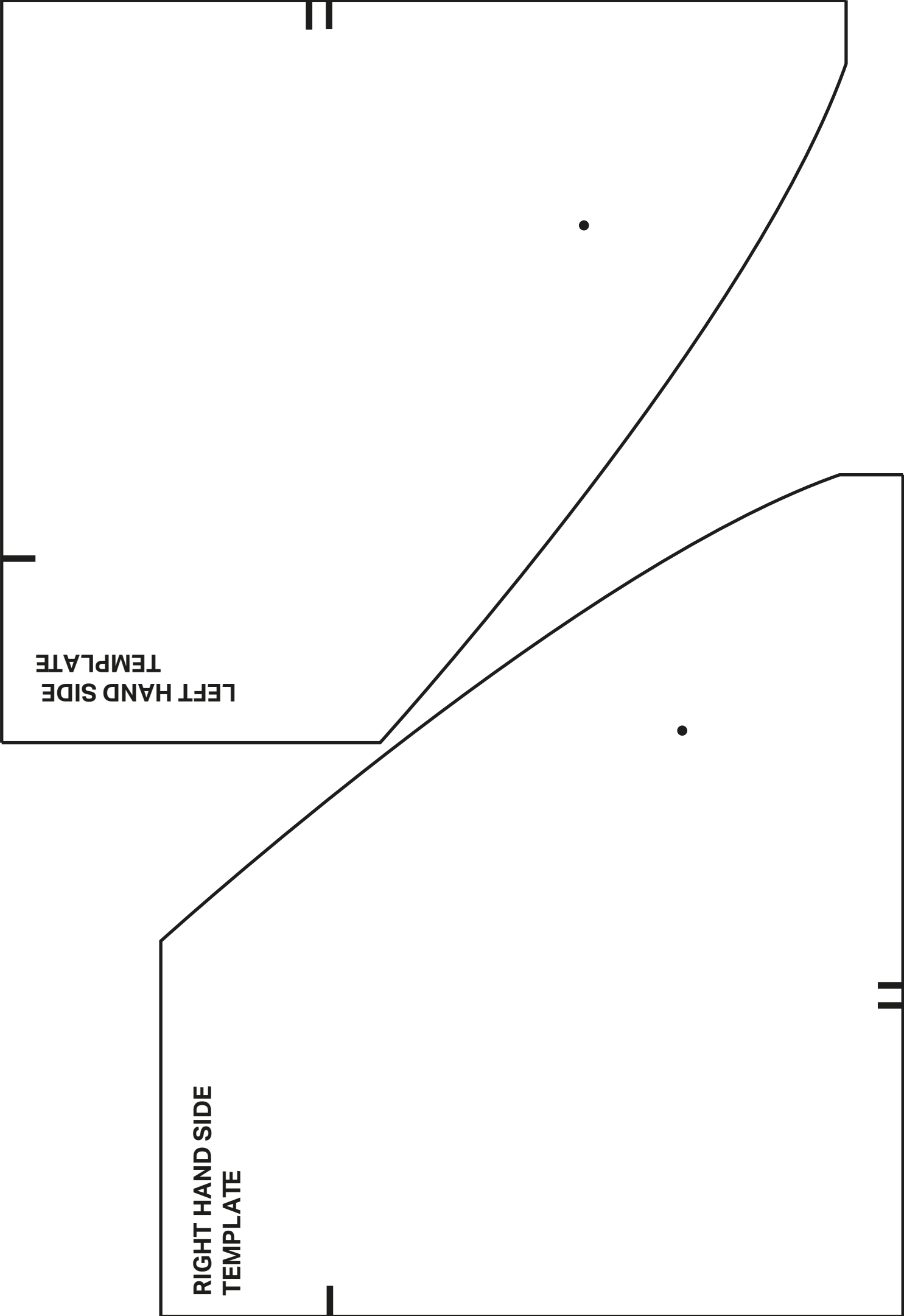
High beam trigger can be found on some models at the right hand side, headlight plug (Purple/Red wire).

Please test the wires for a 12V signal beforehand.

CAN INFORMATION

Where the vehicle has the LED Matrix headlight system as standard, it may not be possible to detect a 12V high beam signal. In these instances it will be necessary to complete the electrical installation using a Lazer CAN Interface. For vehicle specific CAN instructions, please download the "CANM8 Connect" App.







WWW.LAZERLAMPS.COM

+44 (0)1992 677374
sales@lazerlamps.com

Lazer Lamps Ltd, Units 1&2 Harlow Mill Business Centre,
Riverway, Harlow, Essex. CM20 2FD. United Kingdom



MADE IN THE UK



/LAZERLAMPS



/LAZERLAMPS