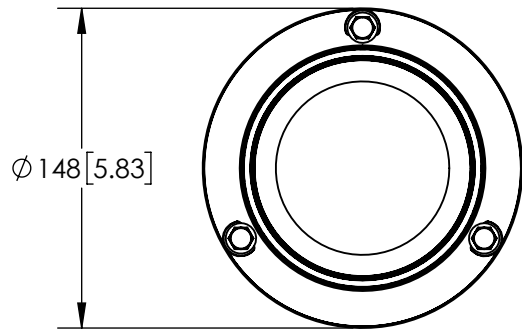
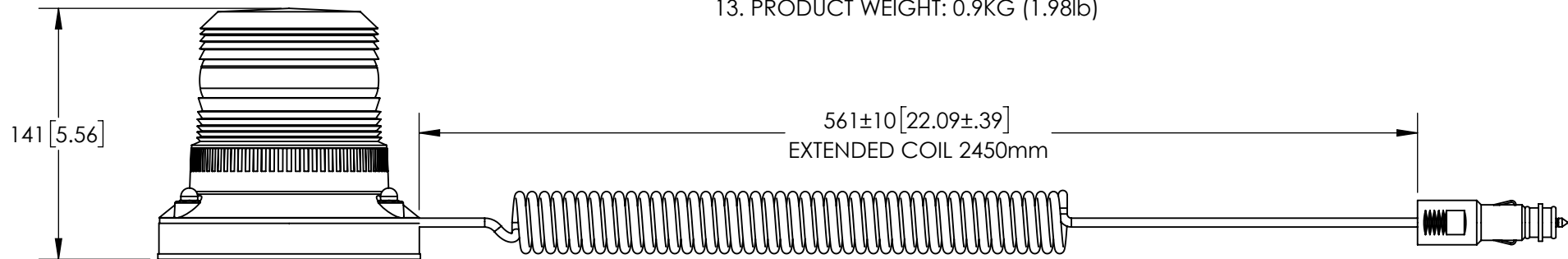


| REVISION HISTORY |                            |            |
|------------------|----------------------------|------------|
| REV.             | DESCRIPTION                | DATE       |
| 01               | REVISED PER LC1492         | 2018-02-12 |
| A                | INITIAL RELEASE PER LC1492 | 2018-04-13 |
| B                | REVISED PER LC2445         | 2019-12-20 |


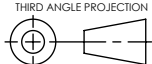


### SPECIFICATIONS

- CERTIFICATIONS: ECE R10, ECE R65 APPROVED  
 Note: Unique components, accessories and hardware kits are not typically Included in the product certification test protocols. Unless otherwise Specified, the product certification referred to herein are predicated Upon the base product model configuration.
- FLASH MODE: DOUBLE FLASH PATTERN (135 FPM)
- VOLTAGE (NOMINAL): 12/24 VDC
- VOLTAGE (EXTREME): 10 to 36 VDC
- CURRENT (RMS): 1.06A (@ 12 VDC NOMINAL)
- CURRENT (PEAK): 1.85A (@ 12 VDC NOMINAL)
- POWER (RMS MAXIMUM): 23W (@ 24 VDC NOMINAL)
- TEMPERATURE RANGE: -20°C (-4°F) TO 50°C (122°F)
- CONNECTION: CIGARETTE PLUG
- MOUNTING: MAGNETIC
- BASE MATERIAL: ASA
- LENS MATERIAL: POLYCARBONATE
- PRODUCT WEIGHT: 0.9KG (1.98lb)



- NOTES:
- DIMENSIONS IN MILLIMETRES [INCHES (FOR REFERENCE)]
  - USE SUB ASSEMBLY (100-EB5017A) FOR MANUFACTURE

| SCALE 1:3.5                                                                                                     |                                                             | APPROVALS                                                                                             | DATE                                        |  <b>ECCO</b> ® <a href="http://www.eccolink.com">www.eccolink.com</a><br><small>Americas (800) 635-5900   Europe +44 (0)113 237 5340   Asia Pacific +61 (0)3 63322444</small> |
|-----------------------------------------------------------------------------------------------------------------|-------------------------------------------------------------|-------------------------------------------------------------------------------------------------------|---------------------------------------------|--------------------------------------------------------------------------------------------------------------------------------------------------------------------------------------------------------------------------------------------------------------------|
| CAD GENERATED DRAWING<br>DO NOT MANUALLY UPDATE.<br>MODEL REFERENCED: B                                         |                                                             | DRAWN BY: NP                                                                                          | 2019-12-20                                  |                                                                                                                                                                                                                                                                    |
| TOLERANCES ARE IN INCHES, AND MILLIMETERS<br>TOLERANCES UNLESS OTHERWISE STATED ARE:                            |                                                             | CHECKED: CRT                                                                                          | 2019-12-20                                  |                                                                                                                                                                                                                                                                    |
| MILLIMETERS DECIMALS<br>XX. ± 1.0mm<br>XX.X ± 0.5mm                                                             | INCHES DECIMALS<br>X.X ± 0.1<br>X.XX ± 0.04<br>X.XXX ± 0.02 | MECH. ENG. KW                                                                                         | 2019-12-09                                  |                                                                                                                                                                                                                                                                    |
|                                                                                                                 |                                                             | ELEC. ENG. M1S                                                                                        | 2019-12-20                                  |                                                                                                                                                                                                                                                                    |
|                                                                                                                 |                                                             | TEST ENG. JUP                                                                                         | 2019-12-20                                  |                                                                                                                                                                                                                                                                    |
|                                                                                                                 |                                                             | SALES.                                                                                                |                                             |                                                                                                                                                                                                                                                                    |
| THIRD ANGLE PROJECTION<br> |                                                             | ELEC. ENG. M1S                                                                                        |                                             |                                                                                                                                                                                                                                                                    |
| Electronically Controlled Use Latest Copy                                                                       |                                                             | <b>ECCOLED, SILVER, MAG, R65, AMB, 12/24V</b><br>CUSTOMER PART NO. EB5017A<br>PRODUCT SERIES: ECCOLED |                                             |                                                                                                                                                                                                                                                                    |
| SIZE: A4                                                                                                        | DWG. NO. EB5017A                                            | SHEET 1 OF 1                                                                                          | Project: LC1492<br>Date Created: 2018-02-12 |                                                                                                                                                                                                                                                                    |
|                                                                                                                 |                                                             |                                                                                                       | REV. B                                      |                                                                                                                                                                                                                                                                    |

PROPRIETARY AND CONFIDENTIAL INFORMATION  
 THIS DRAWING AND THE DESIGN AND OTHER INFORMATION DISCLOSED HEREIN ARE THE PROPERTY OF ELECTRONIC CONTROLS COMPANY AND/OR ITS ECCO SAFETY GROUP AFFILIATES ("ECCO") AND IS ISSUED IN CONFIDENCE TO RECIPIENT FOR ENGINEERING INFORMATION PURPOSES ONLY. THIS DRAWING AND THE DESIGN AND OTHER INFORMATION DISCLOSED HEREIN MAY NOT BE USED, COPIED, REPRODUCED OR OTHERWISE DISCLOSED IN PART OR IN WHOLE TO THIRD PARTIES OR USED FOR ANY OTHER PURPOSE WITHOUT PRIOR ECCO WRITTEN CONSENT. ECCO RESERVES ALL PATENT, COPYRIGHT, TRADEMARK, AND OTHER PROPRIETARY RIGHTS TO THIS DOCUMENT, INCLUDING ALL DESIGN, MANUFACTURING, REPRODUCTION, USE AND SALES RIGHTS THEREOF. THIS DRAWING IS SUBJECT TO RECALL BY ECCO AT ANY TIME, AND YOUR POSSESSION AND/OR USE CONSTITUTES ACCEPTANCE OF THESE TERMS. ©2019 ELECTRONIC CONTROLS COMPANY